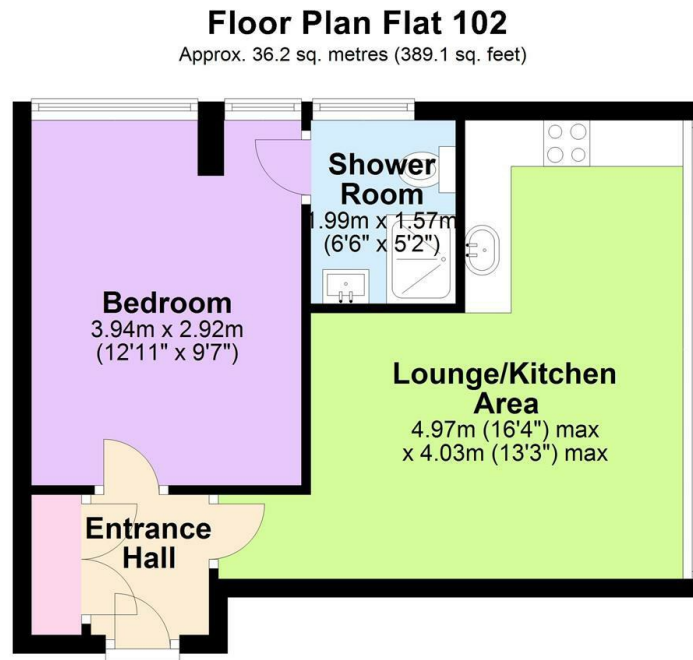




## 102 Park House, 314-322 Seven Sisters Road, Finsbury Park,

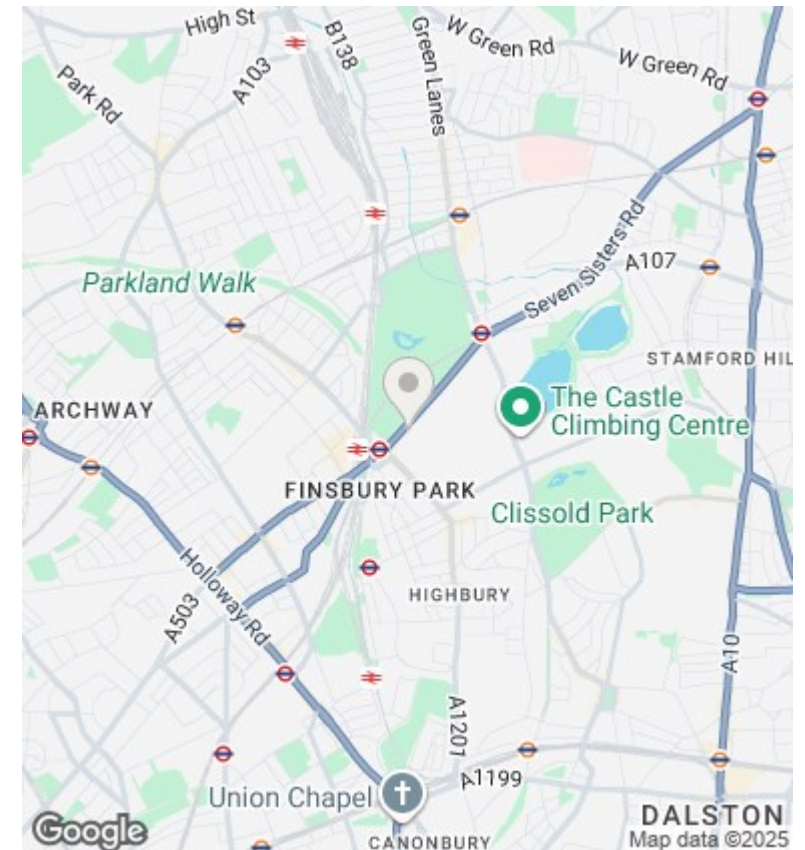
£1,525 Per Month

- A modern one double bedroom flat set on the 10th floor (top floor)
- Tiled Shower Room / WC
- Set in a private purpose built block with a resident caretaker
- Approx 3 minute walk to Finsbury park underground & mainline station
- Open plan modern kitchen
- Walking distance to Finsbury Park



Total area: approx. 36.2 sq. metres (389.1 sq. feet)

Illustrations are for viewing purposes only. Measurements are not to scale. Property Total and Floor Totals are Internal figures only and do not include Garden or Balconies if any shown. Plan produced using PlanUp.



## Viewings

Viewings by arrangement only. Call 020 7485 0112 to make an appointment.

## Council Tax Band

B

## EPC Rating:

D

Energy Efficiency Rating		
	Current	Potential
Very energy efficient - lower running costs		
(92-plus) <b>A</b>		
(81-91) <b>B</b>		81
(69-80) <b>C</b>		
(55-68) <b>D</b>	57	
(39-54) <b>E</b>		
(21-38) <b>F</b>		
(1-20) <b>G</b>		
Not energy efficient - higher running costs		
England & Wales		EU Directive 2002/91/EC